

CIKA

DELICATE AND BENEVOLENT





CIKA

Bollard Range



The Cika bollard has inherited the elegant and discreet style of Chic and Cirko luminaires. Designed to meet PRM standards, it completes the range with a lighting favorable to pathways, parks, bike paths and residential areas. Proposed in 2 sizes (35.4" and 47.2") and accommodating 8 LEDs in 3000 and 4000K, with a fully waterproof head and a decorated protection. Cika is a durable, technical and aesthetic asset, by offering compatibility with the Zhaga standard, eco-responsible design (use of recyclable materials) and its lighting management capabilities. Cika is the ideal candidate for development projects where environmental performance, style and efficiency prevail.





CIKA Highlights



Technical Characteristics

- Simple and resistant form.
- Available in 2 sizes: 35.4" and 47.2".
- Sealed head.
- Optional lighting management systems: automatic adjustment with up to 5 levels depending on the time of day, presence detection, constant flux, graduation via voltage variation, command 1-10V or DALI.



Installation & Maintenance

- Easy installation.
- Access to the class II box (not included) from the access hatch at the rear of the bollard.
- 3 feet pre-wired up to the box.



Environmental and Social Responsibility

- No up light.
- Ecofriendly conception.
- Limits nuisance for roadside properties and the environment.
- Low CO2 emissions thanks to the choice of materials, the high-performance optical system and a reduced amount of packaging.
- Compatible to PRM (People of Reduce Mobility).
- Zhaga compliant optics.



Lighting Performance

- One of the best LEDs on the market.
- Efficient and soothing lighting, ideal to indicate pedestrian and cycling paths, for example.
- Asymmetric or circular lighting possibilities thanks to the LED system and lens modularity.
- LED life cycle: up to 100,000 hours.
- Maximum LED efficiency thanks to good thermal management.



Appearance

- Ragni's conception and design.
- Simple and versatile design, integrable in urban or landscaped areas.
- Creation of coordinated projects in association with the luminaire Chic.
- Opal protection decorated with transparent streaks.





Technical characteristics

For your urban, landscaped or residential projects, the Cika bollard comes in two sizes. Its LED technology allows it to offer efficient, pleasant and eco-nomical markup.

CIKA Data sheet



Electrical characteristics

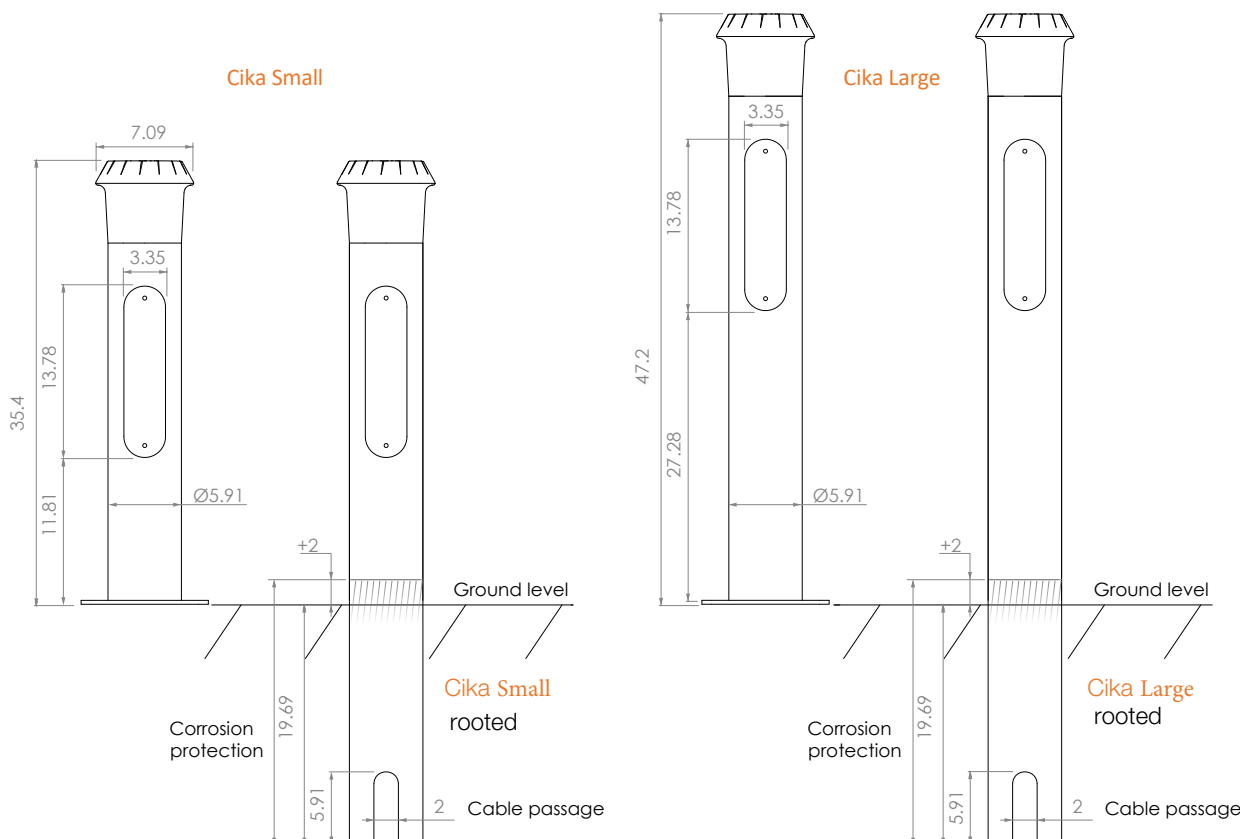
- Power current up to 700mA
- Voltage range: from 21 V to 48 V
- Electrical class: I & II
- Optional surge protector or over/under voltage protection systems

LEDs characteristics

- LED manufacturer : CREE
- Assigned LED's life cycle: 100 000 hours.
- Lumen maintenance, ex : L85 100 000 hrs @ 350mA, 85% of the luminous flow at 100,000 hrs @ 350mA.
- CRI above 70

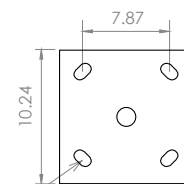
	Cika Small	Cika Large
Height (in)	35.4"	47.2"
Weight (lbs)	12	14
Protection index		
Optical unit		IP 66
Shock resistance		IK 10
Materials		
Body		Extruded aluminum
Head		injected cast aluminum
Protection		Polycarbonate

Dimensions (in)



In the case of a sealing block installation, recommended dimensions:
11.8" x 11.8" x 15.8"

Base plate



4 anchor bolts:
1/2" x 12"



POWER AND LUMINOUS INTENSITY - luminaire output data

3000 K		350 mA			500 mA			700 mA		
Number of LED	P_t (W)	Φ (lm)	(lm/W)	P_t (W)	Φ (lm)	(lm/W)	P_t (W)	Φ (lm)	(lm/W)	
8	10.5	1010	96	14.5	1440	99	20	1900	95	
16	19	2020	106	26.5	2885	109				

4000 K		350 mA			500 mA			700 mA		
Number of LED	P_t (W)	Φ (lm)	(lm/W)	P_t (W)	Φ (lm)	(lm/W)	P_t (W)	Φ (lm)	(lm/W)	
8	10.5	1150	110	14.5	1560	108	20	2050	103	
16	19	2300	121	26.5	3120	118				

P_t (W) = Total power consumption including driver consumption • Φ Nominal flux (lm) • Luminous efficiency (lm/W)

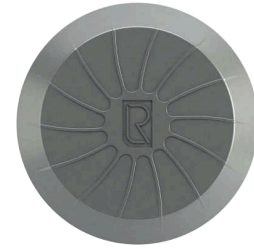




Appearance & Ordering information

The Cika bollard features a bowl decorated with frosted grooves and a plate decorated with streaks surrounding the Ragni logo, underlining the intention to offer a design both assertive and moderate. Its silhouette thus adapts to various settings and harmoniously completes your projects built around Chic or Cirko fixtures.

CIKA



ORDERING INFORMATION

Fixture	# LED	Size	CCT	Drive Current	Distribution	Line Voltage	Pole Style	Head Color	Pole Color
CIK	8								
	16	S - (35.4")	3 - (3000K)	35 - (350 mA)	T1	1-(120-277V)	S-Standard Column	BLK - (Black)	BLK - (Black)
		L - (47.2")	4 - (4000K)	50 - (500 mA)	T2	3-(347-480V)	EM- Embedded	BRZ - (Bronze)	BRZ - (Bronze)
		C- (Custom)		70 - (700 mA)	T3			SLV - (Silver)	SLV - (Silver)
				C- (Custom)	T4			WHT - (White)	WHT - (White)
			T5			RAL #	RAL #		

Color Examples

- **Standard colors:** White, Silver, Bronze and Black.

