



TIGEA LED

light markings product range - bollards



technical characteristics (Customer requested sizes available with no upcharge)

	Tigea 3500	Tigea 4000	Tigea 4500	Tigea 5000
Height (ft)	11.5	13.1	14.8	16.4
Weight (lbs)	63.9	71.7	79.8	88.0
Protection index				
Optical unit			IP 65	
Electrical compartment			IP 54	
Shock resistance			IK 10	
Materials:				
Body			Aluminium	
Protector			Transparent PC with anti-UV treatment	

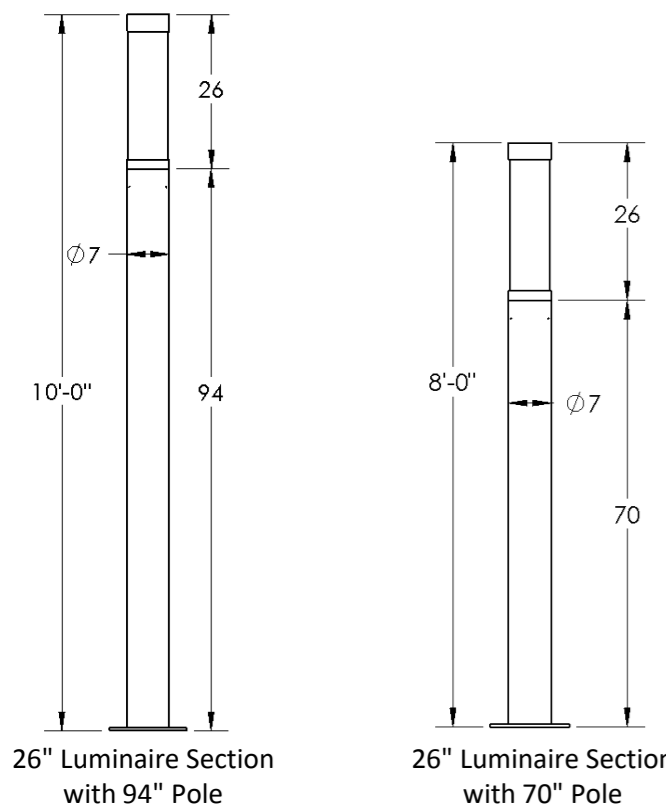
electrical characteristics

- Power current up to 800 mA
- Electrical class: II
- Incorporated driver
- Varistor (protection against high voltages)
- Optional lighting management systems: automatic time-related lowering of intensity with up to 5 levels, presence detection, constant flux, graduation by means of voltage variation, command 1-10V, communication DALI or PWM.

lighting distributions

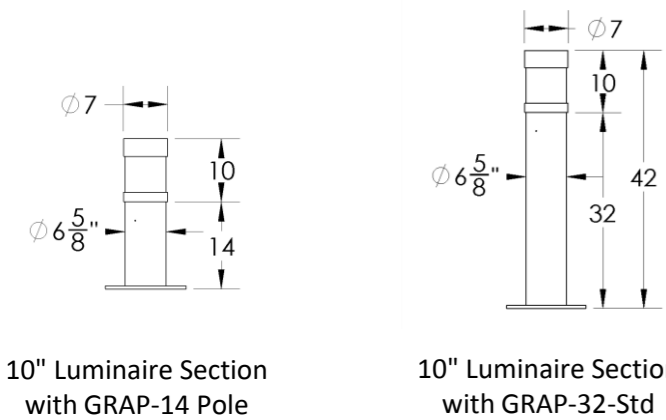
- Type II
- Type V

dimensions (in/ft)



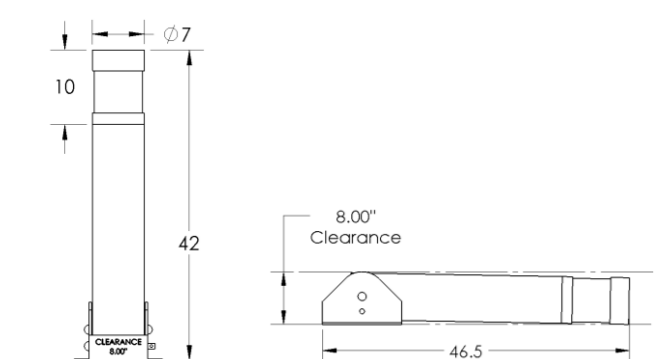
26" Luminaire Section with 94" Pole

26" Luminaire Section with 70" Pole



10" Luminaire Section with GRAP-14 Pole

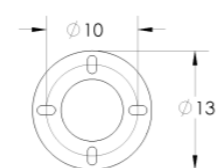
10" Luminaire Section with GRAP-32-Std



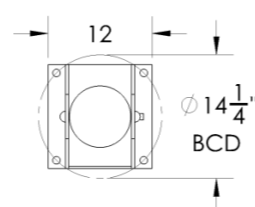
OPTIONAL: Bollard with Hinged Base



TIG-10 Base Plate



TIG-10 with TIG-32-Hinge



acuisens module



The AcuiSens module is a compact LED module composed of 16 LEDs. It is available in a circular distribution pattern and an asymmetrical distribution. It owes its name on the one hand to the visual clarity it provides and, on the other hand, to the feeling of softness conveyed by its ambient lighting. AcuiSens is thermally self-managed thanks to a built-in diaphragm (SYNJET® technology).



AcuiSens circular symmetrical



AcuiSens asymmetrical

POWER AND LUMINOUS INTENSITY - luminaire output data

Number	350 mA			500 mA			700 mA			800 mA		
	P _t (W)	Φ (lm)	(lm/W)	P _t (W)	Φ (lm)	(lm/W)	P _t (W)	Φ (lm)	(lm/W)	P _t (W)	Φ (lm)	(lm/W)
16	21	2200	104.8	30	2900	96.7	40	3850	96.3	47	4150	88.3

P_t (W) = Total power consumption including driver consumption • Φ Nominal flux (lm) • Luminous efficiency (lm/W)

ORDERING INFORMATION - LUMINAIRE SECTION

Model	Head Size	# LED	COLOR TEMP	DRIVE CURRENT	DISTRIBUTION TYPE	LINE VOLTAGE	COLOR
TIG						UNV	
	10"	16	3-3000K	350	T2	UNV - (120v to 277v)	BLK-Black
	26"		4-4000K	500	T5		BRZ-Bronze
	CUSTOM			700		SLV-Silver	
				CUSTOM		WHT-White	
						RAL	

ORDERING INFORMATION - POLE SECTION

POLE TYPE	POLE O.D.	POLE HEIGHT	POLE STYLE	COLOR
TIGP	7.0"	14"	S-STANDARD COLUMN	BLK-Black
GRAP	6.625"	32"	EM-EMBEDDED	BRZ-Bronze
	CUSTOM	70"	R-REMOVABLE	SLV-Silver
		94"	H-HINGED BASE	WHT-White
		CUSTOM		RAL

Luminaire Head Diameter is 7"

Pole sizes include:

* TIGP - 7" Diameter pole (Smooth transition)

* GRAP - 6-5/8" Diameter pole (Stepped Transition)



TIGEA LED

