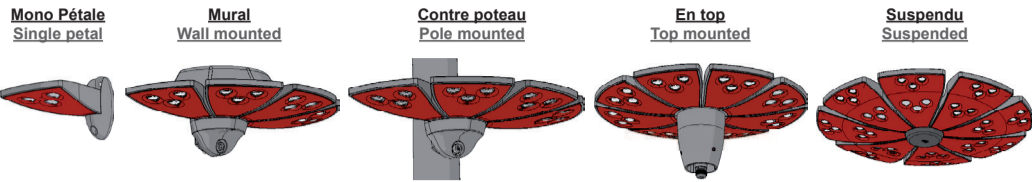


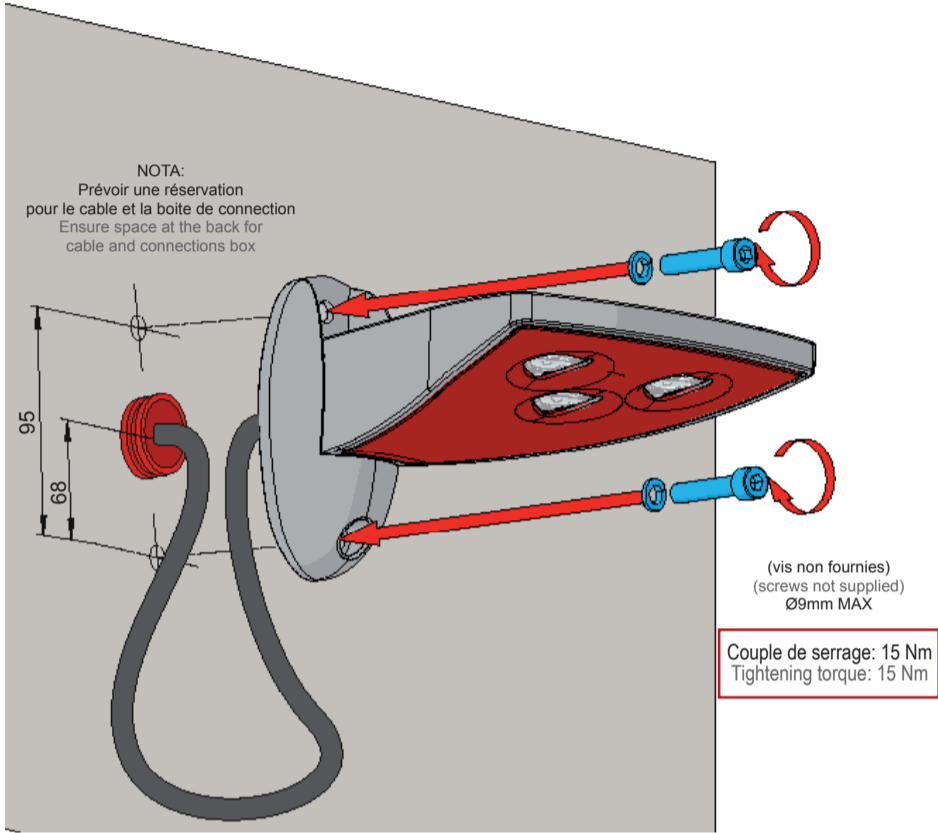
MARGO INSTALLATION & MAINTENANCE



LES TYPES DE MARGO MARGO TYPES

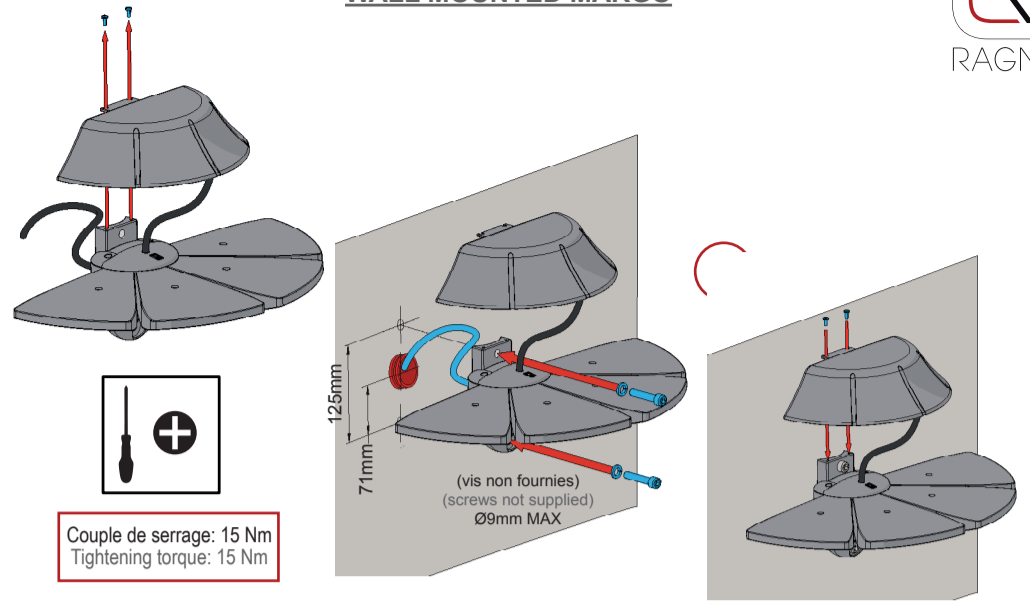


MARGO MONO PETALE SINGLE PETAL MARGO

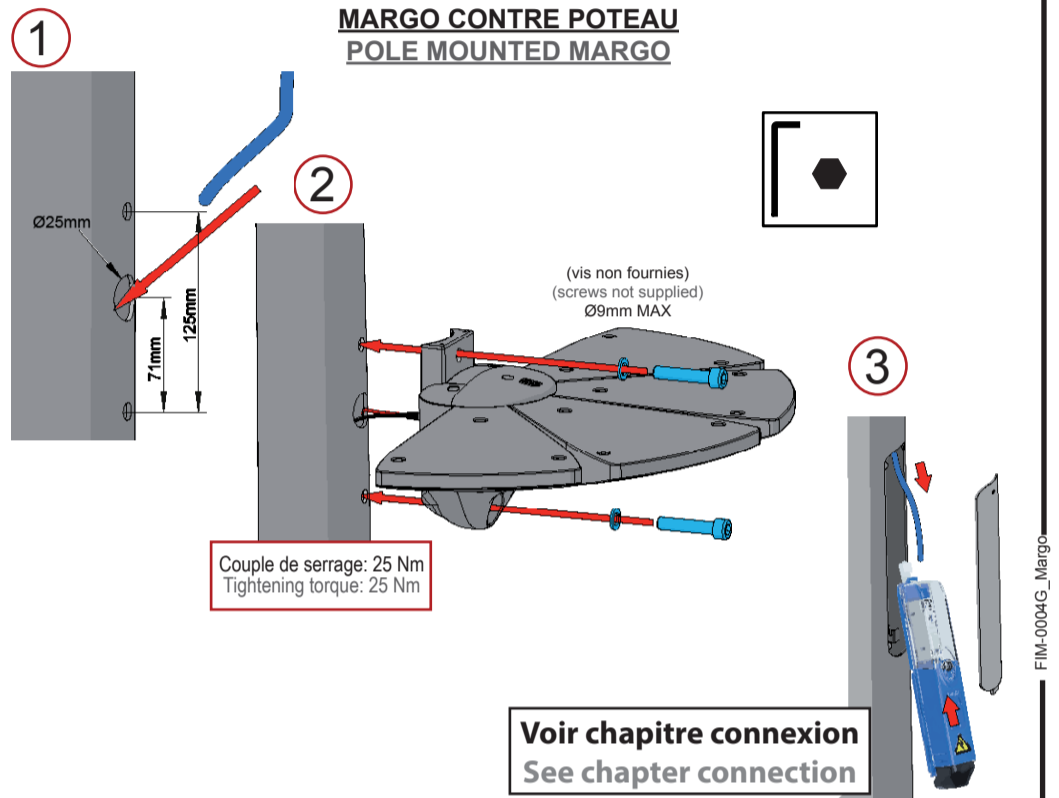


FIM-0004G_Margo

MARGO MURAL WALL MOUNTED MARGO

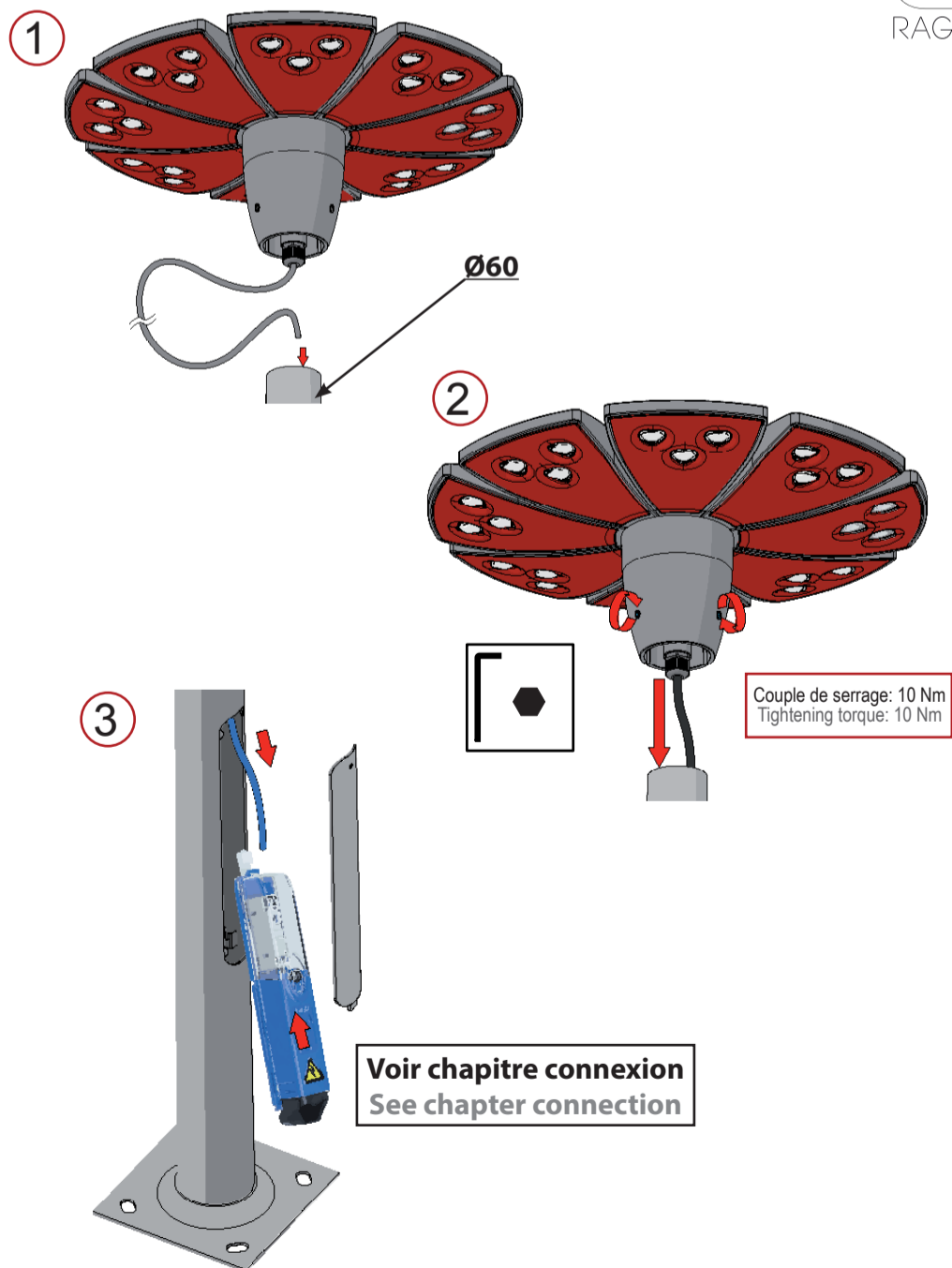


MARGO CONTRE POTEAU POLE MOUNTED MARGO



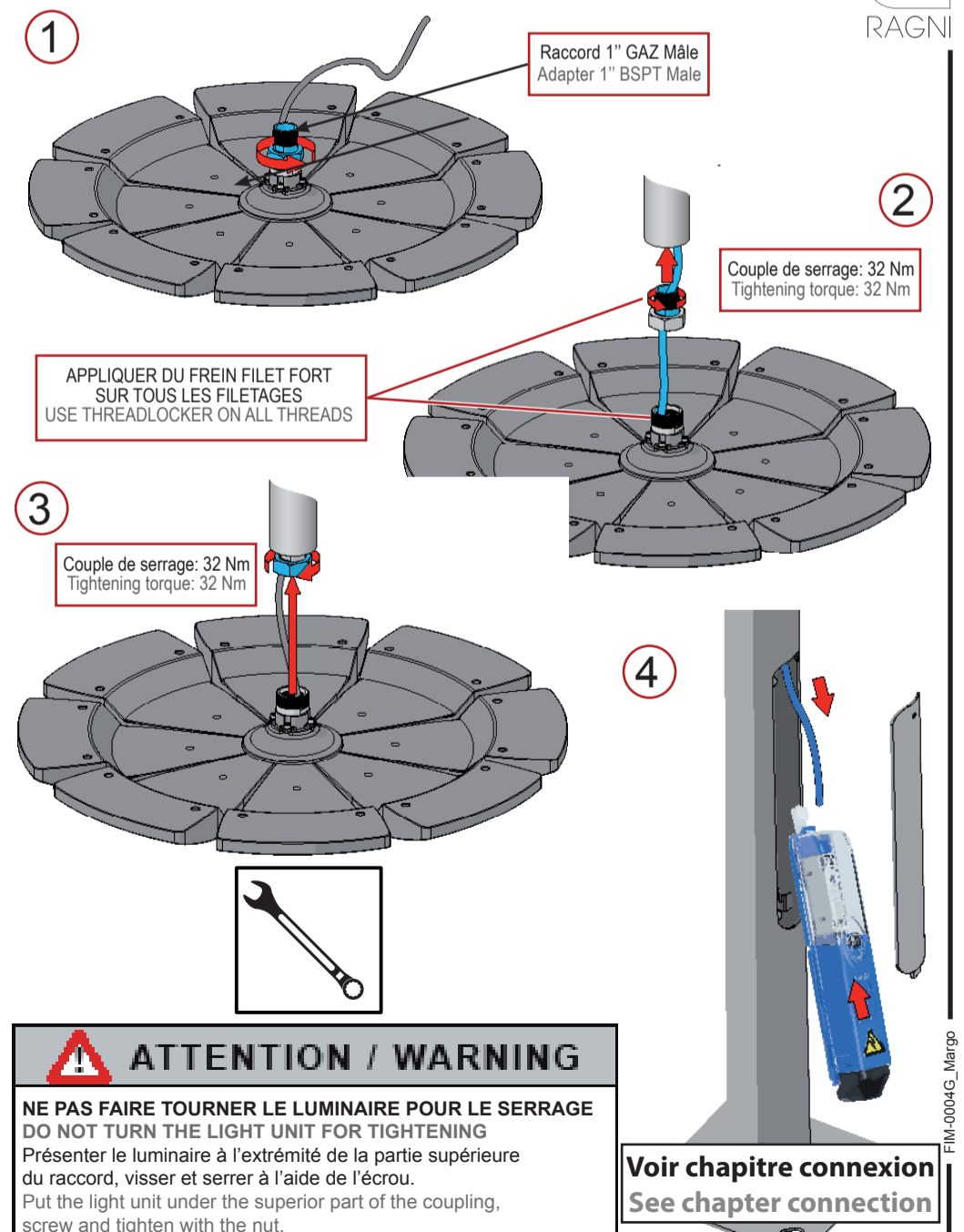
FIM-0004G_Margo

MARGO EN TOP TOP MOUNTED MARGO



FIM-0004G_Margo

MARGO SUSPENDU SUSPENDED MARGO



FIM-0004G_Margo

ATTENTION / WARNING

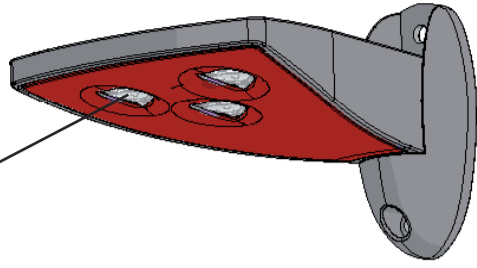
NE PAS FAIRE TOURNER LE LUMINAIRE POUR LE SERRAGE
DO NOT TURN THE LIGHT UNIT FOR TIGHTENING
Présenter le luminaire à l'extrémité de la partie supérieure du raccord, visser et serrer à l'aide de l'écrou.
Put the light unit under the superior part of the coupling, screw and tighten with the nut.

Voir chapitre connexion / See chapter connection

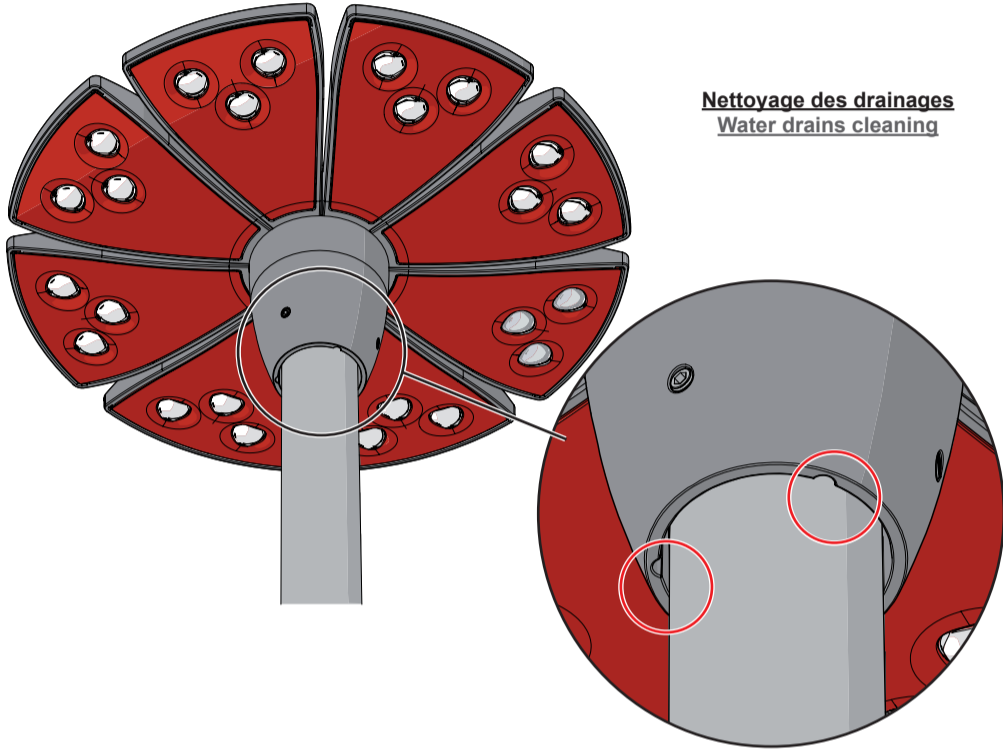
MAINTENANCE
MAINTENANCE



Nettoyage des lentilles
lenses cleaning

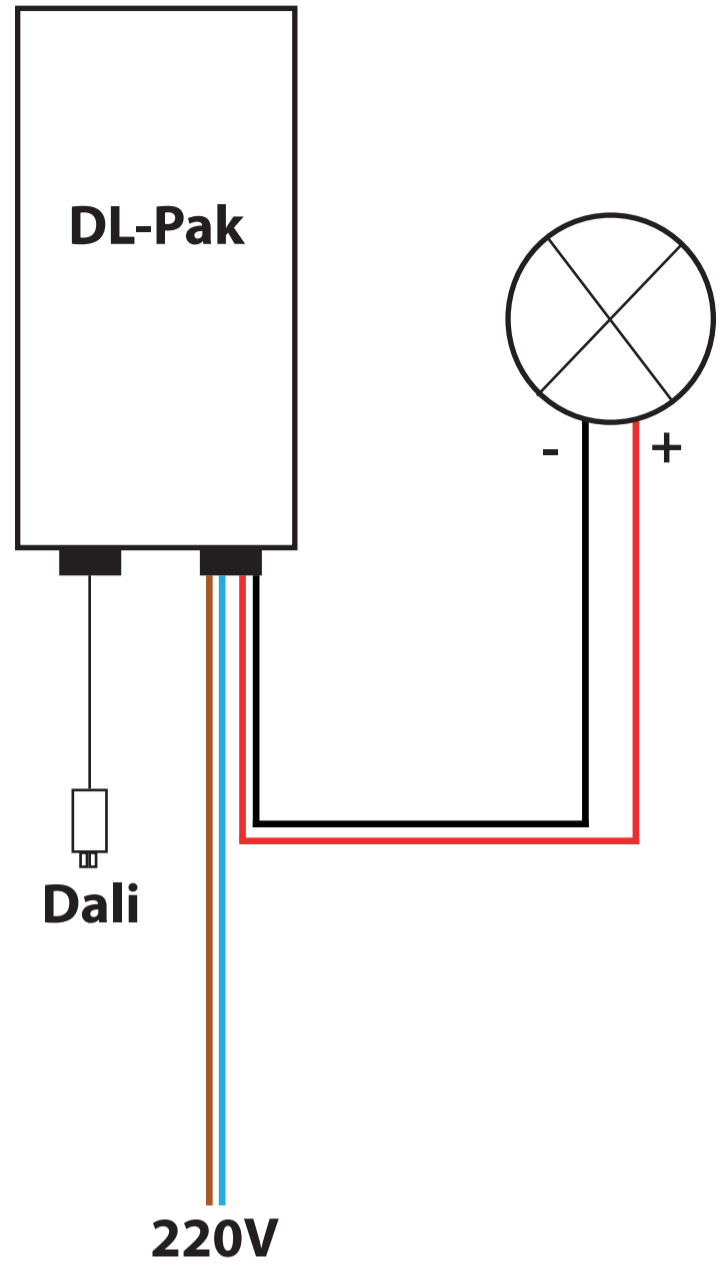


Nettoyage des drainages
Water drains cleaning



FIM-0004G_Margo

CONNEXION
CONNECTION



FIM-0004G_Margo

CARACTERISTIQUES TECHNIQUES
TECHNICAL CHARACTERISTICS



Dimensions (mm) / Dimensions (mm)

MARGO EN TOP / TOP MOUNTED

Mini	Mega	Mix	
	A	B	
	C*		
Margo Mini / Mini Margo	500	196	70
Margo Mega / Mega Margo	700	196	70
Margo Mix / Mix Margo	700	196	70

*Profondeur d'encastrement / Depth of insertion

MARGO SUSPENDU / SUSPENDED

Mini	Mega / Mix	
	A	
	B	
Margo Mini / Mini Margo	500	185
Margo Mega / Mega Margo	700	185
Margo Mix / Mix Margo	700	185

MARGO MURAL ET CONTRE POTEAU / WALL-MOUNTED OR AGAINST A POLE

Mini 1P	Mini 4P	Mini 4P + cache	Mega 4P	Pole Mini 4P + Mega 4P
	A	B	C*	D**
Margo Mini 1P / Mini Margo 1P	164	125	95	27
Margo Mini 4P / Mini Margo 4P	500	152	125	54
Margo Mini 4P + cache / Mini Margo 4P + cover	500	182.5	125	54
Margo Mega 4P / Mega Margo 4P	700	152	125	54

**Entre-axes / Center to center
*Passepois câble / Cable pass

Le Margo est un luminaire qui s'adapte à tout type de projet d'éclairage, grâce à sa grande modularité.

Margo is a luminaire which fits all kinds of lighting projects thanks to its high level of modularity.

En top
Top mounted

	Margo Mini 4P 180° 12 LED	Margo Mini 4P 360° 12 LED	Margo Mini 8P 360° 24 LED	Margo Mega 4P 180° 24 LED	Margo Mega 4P 360° 24 LED	Margo Mega 8P 360° 24 LED	Margo Mega 8P 360° 48 LED	Margo Mix 5P 225° 24 LED	Margo Mix 8P 360° 36 LED
Poids (kg) Weight (kg)	6	6	10	9	9	11	14	10	12
Coef. d'astaticité SC (in°) Asymmetric coeff. const. C ₃ (in°)	0.03			0.06					

Suspendu
Suspended

	Margo Mini 4P 180° 12 LED	Margo Mini 4P 360° 12 LED	Margo Mini 8P 360° 24 LED	Margo Mega 4P 180° 24 LED	Margo Mega 4P 360° 24 LED	Margo Mega 8P 360° 24 LED	Margo Mega 8P 360° 48 LED	Margo Mix 5P 225° 24 LED	Margo Mix 8P 360° 36 LED
Poids (kg) Weight (kg)	6	6	10	9	9	11	14	10	12
Coef. d'astaticité SC (in°) Asymmetric coeff. const. C ₃ (in°)	0.03			0.06					

Mural et contre poteau
Wall-mounted or against a pole

	Margo Mini 1P 3 LED	Margo Mini 4P 180° 12 LED	Margo Mini 4P 180° 12 LED	Margo Mega 4P 6 LED	Margo Mega 4P 180° 12 LED	Margo Mega 4P 180° 24 LED
Poids (kg) Weight (kg)	1	6	10	3	9	14
Coef. d'astaticité SC (in°) Asymmetric coeff. const. C ₃ (in°)	0.02	0.03		0.06		

Position de fonctionnement:
Operating position:

Vertical, flux dirigé vers le bas
Hauteur maximale 8m
Vertical, downward light flux
All types Maximum height 26.25Ft

Classe électrique / Electric class : I / II

Fréquence / Frequency : 50/60Hz (LED)

FIM-0004G_Margo