



Lantana

Street Lighting



Lantana

Street Lighting

A flower bud for some, an almond for others... However, there is no doubt about the very natural appearance of the Lantana luminaire. This evocation instantly imparts a soothing sensation that is always welcome whatever the setting. Offering a rare kind of natural elegance, the Lantana melts into parks and gardens, while softening and embellishing urban areas. With multiple possibilities for fixation, assembly, angling and colors, LED, Lantana is eminently suitable for vast lighting ensembles blending tasteful design and excellent driving conditions.



Lantana

Street Lighting

Highlights

- Nature inspired aesthetics
- Tilt-able fixture with a yoke for aesthetics
- Photometric optimization
- Possibility to coordinate yoke/fixture
- Three mounting options : straight yoke, curved yoke, side arm
- IP 68 vent
- Maintenance with easily accessible tools

Technical Characteristics

Materials:

Fixture: injected cast aluminum

Yoke: injected cast aluminum

Protection: tempered glass

Protection Shape:

Standard: Flat glass

Protection Finish:

Standard: Transparent

Optical:

EVO 2

Maximum Power:

48 LEDs at 700mA

Mounting:

Side mount: Ø60

Depth of insertion: 100 mm

& Yoke Mount

Color options:

Standard colors (White, Silver, Bronze and Black), all RAL colors available upon request



Lantana

Street Lighting



Adjustable decorative yoke



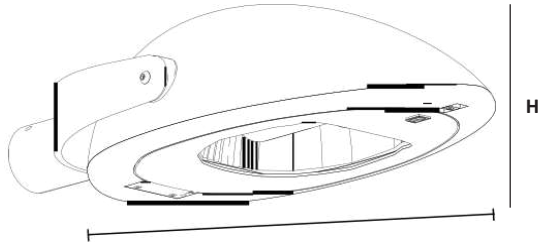
Cylindrical lateral version



control gear access to LED

Electric class

1 and 2



	Lantana 6600	Lantana 6780
Weight (lb)	15.43	23.15
EPA (ft²)	0.753	1.076
Protection Index		
Optical Unit		IP 66
Electrical Housing		IP 54
Shock Resistance		IK 08
Dimensions (in)	L 28.35 H 6.89	L 36.22 H 9.45

Options

IK 10 upon request.

Disconnection upon opening



Lantana

Street Lighting

Power and luminous intensity - luminous output

3000K	350 mA			500 mA			700 mA		
	P _t (W)	Φ (lm)	(lm/W)	P _t (W)	Φ (lm)	(lm/W)	P _t (W)	Φ (lm)	(lm/W)
Number of LEDs									
16	21.4	1988	93	28.2	2867	102	36	3636	101
32	34.4	3976	116	48.8	5734	118	68.9	7271	106
48	51	5964	117	72.6	8601	118	102.3	10907	107

4000K	350 mA			500 mA			700 mA		
	P _t (W)	Φ (lm)	(lm/W)	P _t (W)	Φ (lm)	(lm/W)	P _t (W)	Φ (lm)	(lm/W)
Number of LEDs									
16	21.4	2147	100	28.2	3097	110	36	3932	109
32	34.4	4294	125	48.8	6193	127	68.9	7863	114
48	51	6441	126	72.6	9290	128	102.3	11795	115

P_t (W) = Total power consumption including driver consumption

Φ Nominal flux (lm)

Ordering Information

Model	Size (mm)	# LED	CCT (K)	Drive Current	Distribution	Line Voltage	Mounting	Fixture Color
LAN								
	6 – (6600)	16	3 – (3000)	35 – (350)	T1	1 - (120-277)	LT- (Lateral)	BLK – (Black)
	7 – (6780)	32	4 – (4000)	50 – (500)	T2	3 - (347-480)	YK -(Yoke Mount)	BRZ – (Bronze)
		48		70 – (700)	T3			SLV – (Silver)
				C - (Custom)	T4			WHT – (White)
					T5			(RAL #)



Lantana

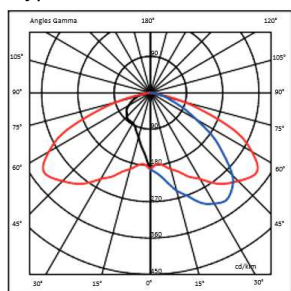
Street Lighting



Photometric Distributions

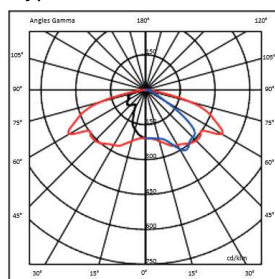
Asymmetrical road lighting

Type III Short / ASY01



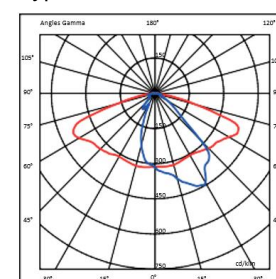
Main and secondary roads, high visual comfort and almost zero glare (very low TI).

Type II / ASY02



Normal to wide roads with adjacent channels (pavements, cycle paths...), wide spacing between light points.

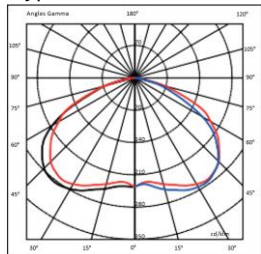
Type II Short / ASY03



Narrow lanes, area to be lit targeted

Circular distribution

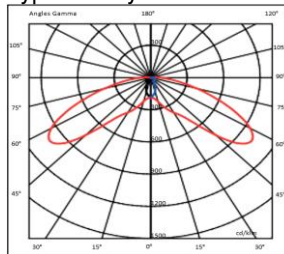
Type VS / CIR01



Atmospheric lighting of squares, car parks, town centres, pedestrian areas, parks and gardens. Central facility..

Symmetrical distribution

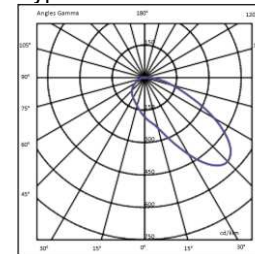
Type VS Symmetric / SYM01



Atmospheric lighting of squares, car parks, town centres, pedestrian areas, etc. Axial installations (on median strips, on catenary systems, between pavement and bicycle path).

Pedestrian crossing

Type III / PC 01



Completes lighting on protected crossings. .



Arctia Arm

Lantana

Suggestions for ensembles



A - Wall
mounting



B - Java 800
Dryas bollard

C - Java 800

D - Kima 800

E - Java 600

F - Kima 700

Cyarinis Arm

A - Wall
mounting



C - Java 700
Imia bollard





Encierro Arm

Lantana

Suggestions for ensembles
Propositions d'ensembles



A - Wall
mounting



B - Jima 400



C - Kima 800



D - Kima 800



E - Kima 600



Orizus Arm

A - Wall
mounting



B - Jima 500



C - Java 800



D - Java 800



E - Java 600





St-Louis Arm



Lantana

Suggestions for ensembles

A - Wall mounting

B - Jima 800

C - Kima 800

D - Java 600

Surf Arm



A - Java 800

B - Java 800

C - Java 800

D - Java 800

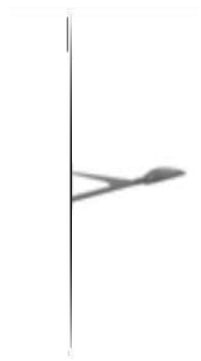


CONSOLE Arm



Lantana

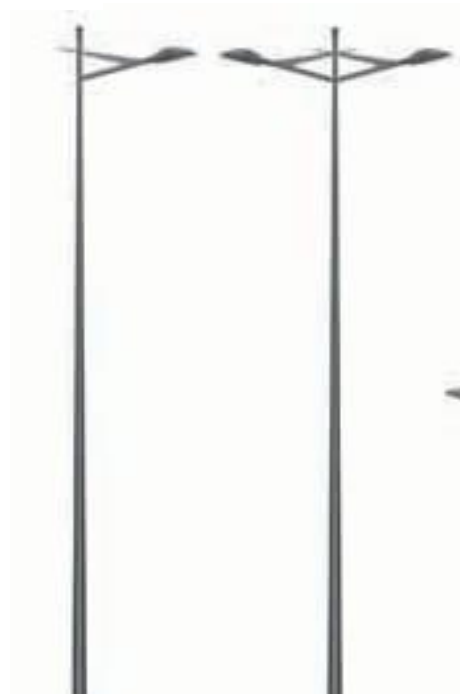
Suggestions for ensembles



A - Wall
mounting



B - Jima 400



C - Kima 800



D - Kima 800

E - Kima 600
Saleya bollard

