



EKKO

Street Lighting



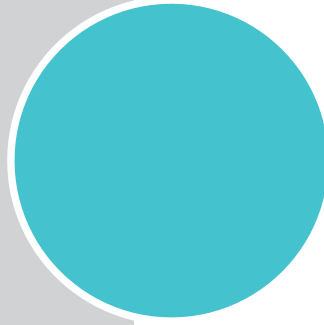


Ekko

Street Lighting

Ekko is right choice if you don't want compromise between efficiency and economy. Just like its name says, this luminaire in its original form with an aerodynamic cap stands out especially for its price. Available in two sizes and compatible with traditional and LED light sources that gives a powerful light on the roadway. Cherry or cake: mounting sleeve gives two options which are intended to be compatible for top and side mounting. Economical, original, powerful and functional, Ekko is everything that you need for street lighting.





Ekko

Highlights

- 2 sizes available
- Economic fixture
- Tool-free opening and closing
- Door retention (compass)
- Double hinge



Technical characteristics

Materials:

Fixture: Injected cast aluminum
aluminum Protection: Tempered glass

Protection shape:

Standard: Flat glass

Protection finish:

Standard: Transparent

Optical:

EVO 2

Maximum power:

48 LED at 700 mA

Mounting:

Side mount: $\varnothing 1.65'' \rightarrow \varnothing 2.36''$

Top mounted: $\varnothing 2.36''$

Tilt top mounted: 3°

Depth of insertion: 4.33" mm

Color Options:

Standard colors are Black, Bronze, Silver, and White, all RAL colors available upon request

Ekko

Street Lighting

Electrical class 1 and 2



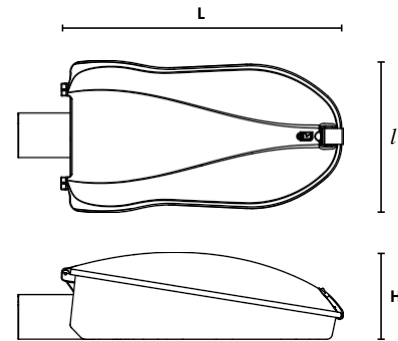
+ Hook for tool-free opening



+ Side mounted



+ Top mounted



| | Ekko S | Ekko L |
|---------------------------------------|---------------|---------------|
| Weight (lb) (w/o control gear) | 8.82 | 13.23 |
| EPA (ft²) | 0.538 | 0.861 |
| Protection Index | | |
| Optical Unit | IP 66 | IP 66 |
| Electrical Compartment | IP 66 | IP 66 |
| Shock Resistance | IK 08 | IK 08 |
| Dimension (in) | L I H | L I H |
| | 21.1 11.1 6.5 | 25.4 13.4 7.9 |

Options

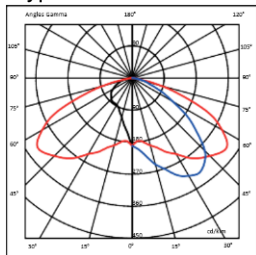
Disconnects upon opening



Photometric distributions

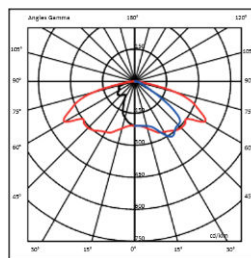
Asymmetrical road lighting

Type III



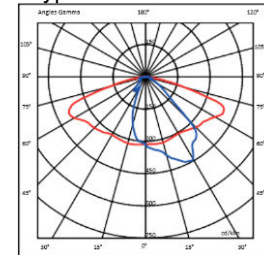
Main and secondary roads, high visual comfort and almost zero glare (very low TI).

Type II



Normal to wide roads with adjacent channels (pavements, cycle paths...), wide spacing between light points.

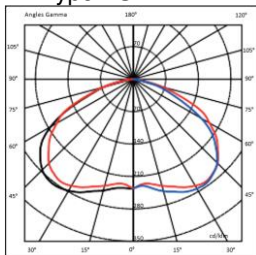
Type II



Narrow lanes, area to be lit targeted

Circular distribution

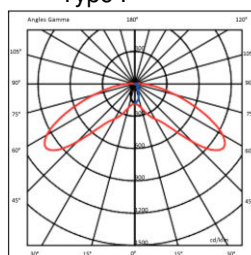
Type VS



Atmospheric lighting of squares, car parks, town centres, pedestrian areas, parks and gardens. Central facility.

Symmetrical distribution

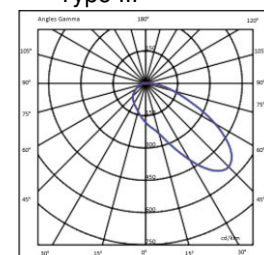
Type I



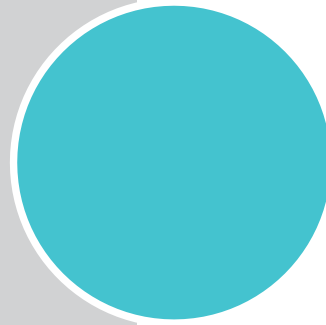
Atmospheric lighting of squares, car parks, town centres, pedestrian areas, etc. Axial installations (on median strips, on catenary systems, between pavement and bicycle path).

Pedestrian crossing

Type III



Completes lighting on protected crossings.



Ekko

Power and luminous intensity

| 3000K | | 350 mA | | | 500 mA | | | 700 mA | | |
|----------------|--------------------|--------|--------|--------------------|--------|--------|--------------------|--------|--------|--|
| Number of LEDs | P _t (W) | Φ (lm) | (lm/W) | P _t (W) | Φ (lm) | (lm/W) | P _t (W) | Φ (lm) | (lm/W) | |
| 16 | 21.4 | 1988 | 93 | 28.2 | 2867 | 102 | 36 | 3636 | 101 | |
| 32 | 34.4 | 3976 | 116 | 48.8 | 5734 | 118 | 68.9 | 7271 | 106 | |
| 48 | 51 | 5964 | 117 | 72.6 | 8601 | 118 | 102.3 | 10907 | 107 | |

| 4000K | | 350 mA | | | 500 mA | | | 700 mA | | |
|----------------|--------------------|--------|--------|--------------------|--------|--------|--------------------|--------|--------|--|
| Number of LEDs | P _t (W) | Φ (lm) | (lm/W) | P _t (W) | Φ (lm) | (lm/W) | P _t (W) | Φ (lm) | (lm/W) | |
| 16 | 21.4 | 2147 | 100 | 28.2 | 3097 | 110 | 36 | 3932 | 109 | |
| 32 | 34.4 | 4294 | 125 | 48.8 | 6193 | 127 | 68.9 | 7863 | 114 | |
| 48 | 51 | 6441 | 126 | 72.6 | 9290 | 128 | 102.3 | 11795 | 115 | |

P_t (W) = Total power consumption including driver consumption
 Φ Nominal flux (lm)

Ordering Information

| Model | Size | # LED | CCT (K) | Drive Current | Distribution | Line Voltage | Mounting | Color Fixture |
|-------|------|-------|------------|---------------|--------------|---------------|-------------|----------------|
| EKK | S | 16 | 3 – (3000) | 35 – (350 mA) | T1 | 1 - (120-277) | Top/Lateral | BLK – (Black) |
| | M | 32 | 4 – (4000) | 50 – (500 mA) | T2 | 3 - (347-480) | | BRZ – (Bronze) |
| | | | | 70 – (700 mA) | T3 | | | SLV – (Silver) |
| | | | | Custom | T4 | | | WHT – (White) |
| | | | | T5 | (RAL #) | | | |

